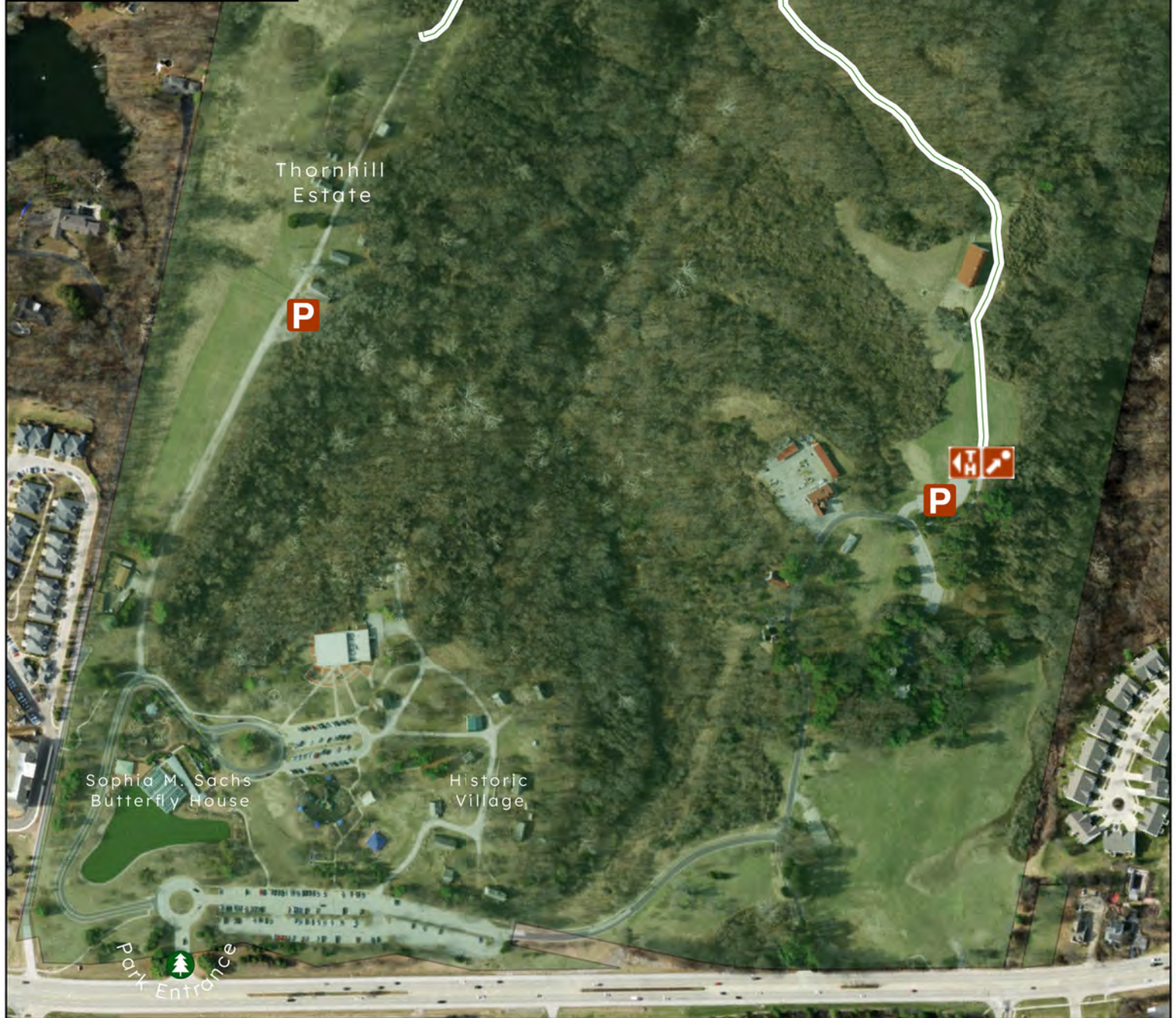


30
30
Hikes Program
 30 Trails • 30 Minutes
St. Louis County Parks



Faust Park
15185 Olive Boulevard

Take the trail to the end and back for a total of 1.40 miles. This is a moderately difficult trail through open and wooded habitat on undulating terrain. This hike offers views of wildlife as well as the historic estate that belonged to the second Governor of Missouri, Frederick Bates. Faust Park also boasts the Butterfly House, the historic village, and the St. Louis Carousel.



-  Trailhead
-  30-30 Stamp
-  Parking
-  Park Boundary