

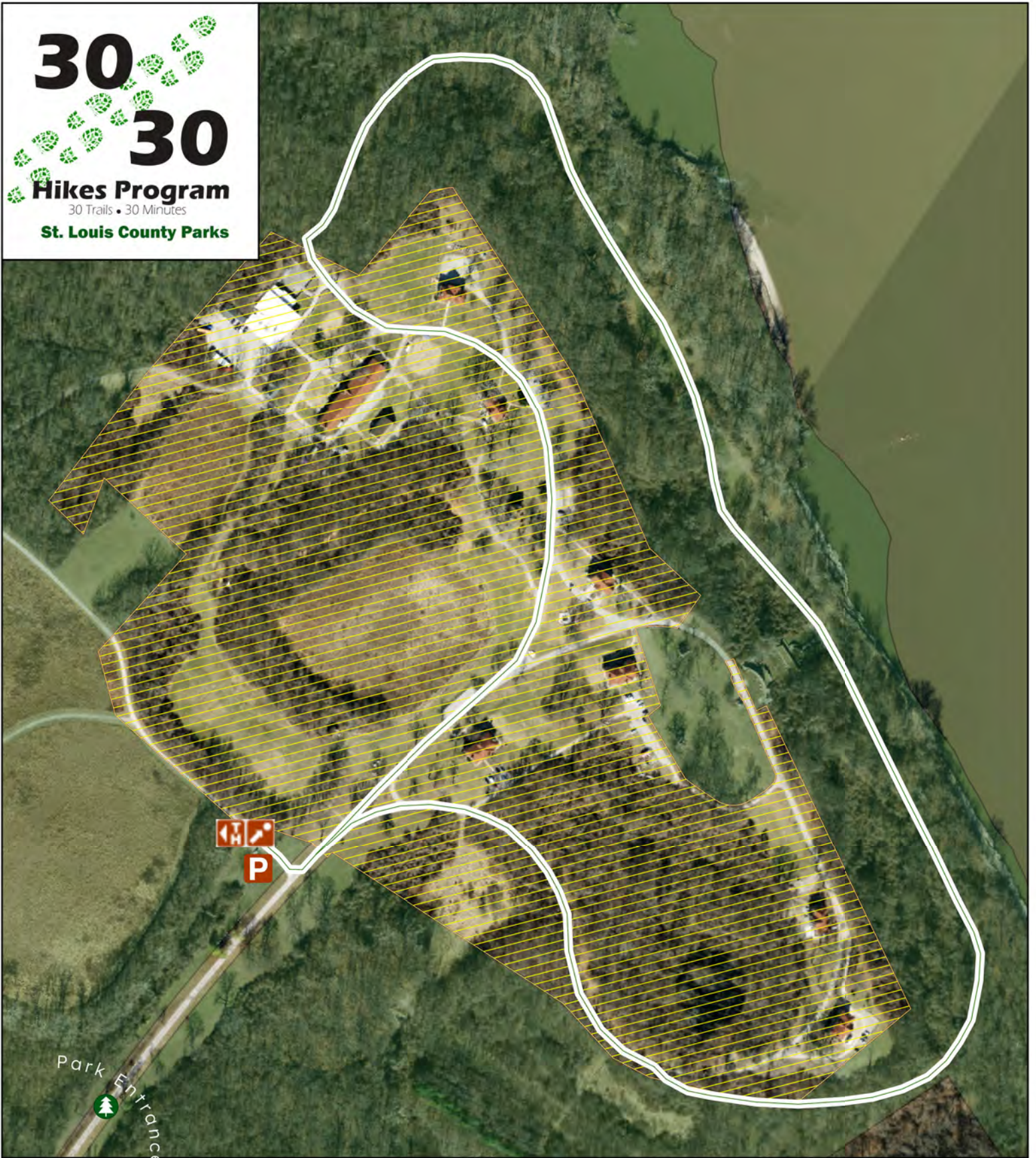
**30**  
**30**



**Hikes Program**

30 Trails • 30 Minutes

**St. Louis County Parks**



Park Entrance



**Fort Belle Fontaine Park**  
**13002 Bellefontaine Road**

Take this paved walking loop for a total of 1.70 miles. This trail has excellent views of the Missouri River. The Fort Bellefontaine site was the first US Military post located in the newly acquired Louisiana Territory.

-  Trailhead
-  30-30 Stamp
-  Parking
-  Park Boundary
-  State Property